

(24)

22

(28) 23 31

J F E システムズ株式会社

(E05173)

28

22

23

31

24

27 30

(EDINET)

J F E システムズ株式会社

.....
.....
.....
.....
.....
.....
.....
.....
.....
.....
.....
.....
.....
.....
..... 10
..... 11
..... 13
..... 14
..... 14
..... 15
..... 17
..... 17
..... 17
..... 19
..... 20
..... 20
..... 22
..... 23
..... 23
..... 24
..... 28
..... 36
..... 37
..... 79
..... 103
..... 104
..... 104
..... 104
..... 105

24

23 24

28 (22 23 31)

JFE Systems, Inc.

03 5637 2100()

03 5637 2100()

(1)

	24	25	26	27	28
	19	20	21	22	23
()	33,948,810	33,742,544	32,687,004	27,714,064	27,100,764
()	1,284,939	1,357,381	1,361,171	181,115	419,178
()	303,041	663,022	576,786	196,244	204,268
()					202,219
()	8,052,812	8,507,547	8,889,553	8,875,016	8,965,393
()	16,997,766	14,631,300	15,834,455	14,884,210	16,113,713
()	99,342,78	104,974,30	109,507,33	109,249,79	110,441,91
()	3,858,92	8,442,91	7,344,79	2,498,97	2,601,14
()					
()	45,9	56,3	54,3	57,6	53,8
()	3,9	8,3	6,8	2,3	2,4
()	33,4	11,0	10,0	29,8	27,6
()	371,026	3,831,615	2,344,731	1,643,838	2,922,130
()	1,109,675	619,131	954,774	1,114,539	1,287,143
()	643,616	3,093,784	687,006	613,471	502,464
()	237,814	356,515	1,059,465	975,293	2,115,863
()	1,538	1,493	1,505	1,530	1,515

()

(2)

	24	25	26	27	28
	19	20	21	22	23
()	30,477,321	30,060,453	28,845,237	23,864,205	23,208,122
()	1,247,058	1,260,789	1,211,747	125,537	399,968
()	313,212	636,789	536,209	187,368	204,968
()	1,390,957	1,390,957	1,390,957	1,390,957	1,390,957
()	78,530	78,530	78,530	78,530	78,530
()	7,670,226	8,087,132	8,403,458	8,370,942	8,465,969
()	15,291,248	13,008,440	14,271,844	13,750,198	14,799,989
()	97,672.56	102,981.43	107,009.52	106,595.47	107,805.53
()	2,800	2,800	2,800	1,400	1,400
()	()	()	()	()	()
()	3,988.43	8,108.87	6,828.09	2,385.94	2,610.06
()					
()	50.2	62.2	58.9	60.9	57.2
()	4.1	8.1	6.5	2.2	2.4
()	32.3	11.5	10.7	31.2	27.5
()	70.2	34.5	41.0	58.7	53.6
()	1,313	1,278	1,293	1,332	1,299

()

58	()	
61				
62				(
)			
63	10			
		(16	18
)
10				
11				
10				
		ISO9001		
11	ISO9001	()
	ISO9001	(FA)
10				
10				
10	10			
11				
12		ISO9001		
12				
13				
13			4832	
14				15
15				
16	12			
17	ISO14001			
18	12			
19				
19		ISO14001		
21	10	JSU Inc.		28
23				

SI)

SI

()

SI

()

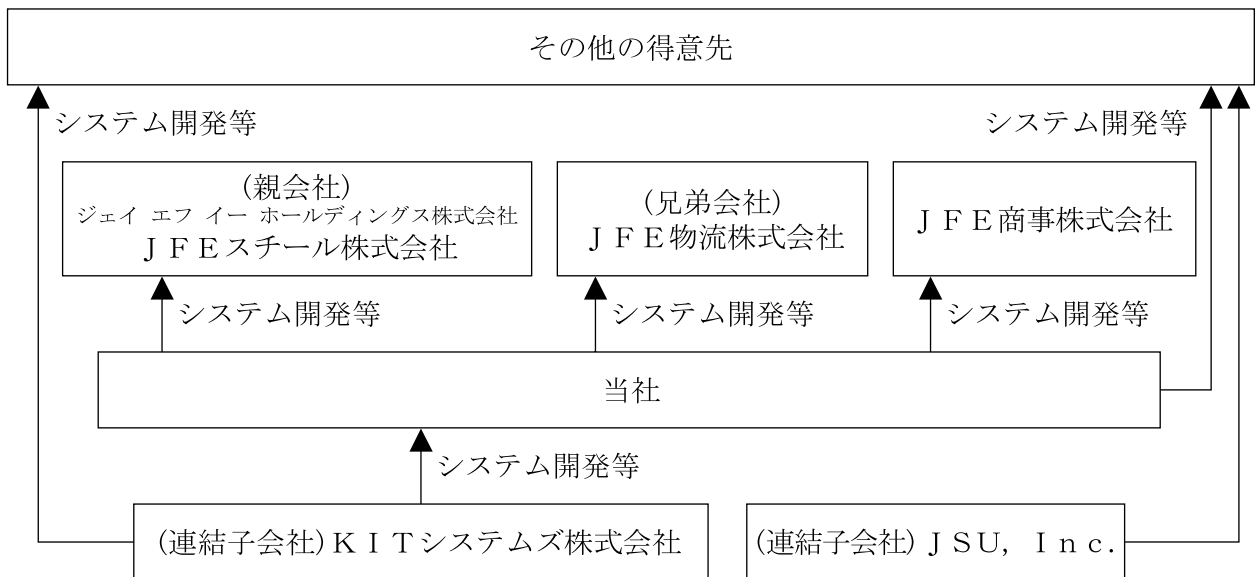
SI

()

()

EC EDI ()

()



(1)

		()		()		
		147,143,008		67.7 67.7		()
		239,644,544		67.7 2.5		()

()

(2)

		()		()		
		200,000		67.5		()
		100,000		100.0		

()

10

(1)	6,559,750
(2)	49,662
(3)	19,689
(4)	969,087
(5)	2,941,096

(1)

23 31

	1,515
	1,515

()

10

(2)

			23	31
()	()	()	()	()
1,299	42.0	14.9		6,152,436

	1,299
	1,299

()

10

282

59

52

(3)

23 31

23 27

23

23

(1)

22

23

31

23

11

SI

IT

2.2%

27,100

121.5
204

404

131.4

419

4.1

(2)

2,115

1,140

1,278

2,922

419

206

806

1,065

172

1,287

1,102

181

1,634

(1, 105)
113 389
502
1, 140 2, 115
1, 820

(1)

	()	()
	22,740,824	3.8
	22,740,824	3.8

()

(2)

	()	()	()	()
	26,249,099	4.3	4,089,495	17.2
	26,249,099	4.3	4,089,495	17.2

()

(3)

	()	()
	27,100,764	2.2
	27,100,764	2.2

()

	()	()	()	()
	8,995,232	32.5	9,007,579	33.2

23

SI

23

IT
IT
SI

IT

SI

SCM(*1)

ERP(*2)

Smile (*3)

SI

J-
J-Smile

(*1) SCM Supply Chain Management IT

(*2) ERP Enterprise Resource Planning

(*3) J-Smile JFE Strategic Modernization & Innovation Leading System

SE

67.7

(1)

IT

IT

33.3%

(2)

(3)

(4)

22

29

23

(1)

SI

ERP

14

ERP

(1)

	22	23		
	27,714	27,100	613	2.2%
	4,463	4,602	139	3.1%
	16.1%	17.0%		
	182	404	221	121.5%
	0.7%	1.5%		
	181	419	238	131.4%
	0.7%	1.5%		
	196	204	8	4.1%
	0.7%	0.8%		

2.2% 27,100

SI

SI

Fi Bridge

BI (*)

(*) BI Business Intelligence

131.4 419

4.1 204

(2)

			2,922	
			1,278	
1,287		172		
	1,634			1,105
	389			113
	502		111	

	CN\$			
CN\$		8,280		7,150
	CN\$		22	
		22		

534

119

436

421

445

424

(1)

()			()		()	
				(m)		
()			947	329 (1, 118 45)	1, 277	219

()

()			()	()	
()			215	238	
()			41	213	
()			45	141	
()			22	55	
SI ()			43	112	
()			74	232	

()

()				
()			140 33	
()			140 40 30	

()

12

(2)

	()			()	()	
	()			201	73	

()

(3)

(1)

1,507

693

()			()						
()		STEP1	67	40	107		23 7	24 3	

()

(2)

(1)

	()
	338,050
	338,050

	(23 31) ()	(23 24) ()		
	78,530	78,530		
	78,530	78,530		

(2)

(3)

(4)

(5)

		()	()	()	()	()	()
14	20	62,824	78,530		1,390,957		1,959,235

() 14 20

(6)

								23	31
								()	
()		3	6	27	8		1,944	1,988	
()		525	86	56,406	522		20,991	78,530	
()		0.67	0.11	71.83	0.66		26.73	100.00	

()

(7)

		23	31
		()	()
		51,165	65.15
		6,148	7.83
		2,500	3.18
		500	0.64
	48	500	0.64
	14	500	0.64
	17	500	0.64
	33 11	500	0.64
		500	0.64
CBNY-DFA INVESTMENT TRUST COMPANY-JAPANESE SMALL COMPANY SERIES	6300 BEE CAVE ROAD BLDG ONE AUSTIN TEXAS 78746 USA 14	174	0.22
		62,987	80.21

(8)

			23	31
	()	()		
	78,530	78,530		
	78,530			
		78,530		
()	()			

				23	31
		()	()	()	()

(9)

(1)

(2)

(3)

(4)

454

1, 400

23	24	109, 942
		1, 400

(1)

	24	25	26	27	28
	19	20	21	22	23
()	165, 000	137, 000	117, 000	91, 000	83, 000
()	116, 000	92, 100	65, 000	68, 100	58, 500

()

(2)

	²² 10	11	12	23		
()	68, 900	65, 000	76, 000	75, 500	83, 000	82, 800
()	60, 500	58, 500	64, 600	73, 500	73, 200	63, 300

()

							()
			25 11	49 10 12 13 15 19 22 22	()		() 5 27
			24 5 15	48 11 13 15 18 18 19 19	IT ()		() 5 70
			23 5 15	46 63 10 12 12 14 16 18 19 21 21 22 22 22	()		() 4 74
			23 8 20	47 12 15 15 16 17 18 20	EC/EDI () () DB e- () ()		() 4 69
					()		

							()
			27 17	50 15 18 22 22 23 23	IT IT		()5
			25 10	48 62 10 11 13 14 15 18 20 21 22 23 23	1 1 1 JFE		()5
			28 15	54 13 15 17 18 18 19 22 22) IT	(()4
			23 23	46 13 16 20 22 23	αO		()5 10
			24 24	49 12 15 15 20 21			()6 8
			28 30	51 11 14 14 12 17 18 21 23	LSI		()6 45

							()
			33	58 15 20 21	() ()		()3
			32 20	57 63 10 15 23 23 23	IT		()6
							303

()

15
16

21 23
22 24
23 24
23 24

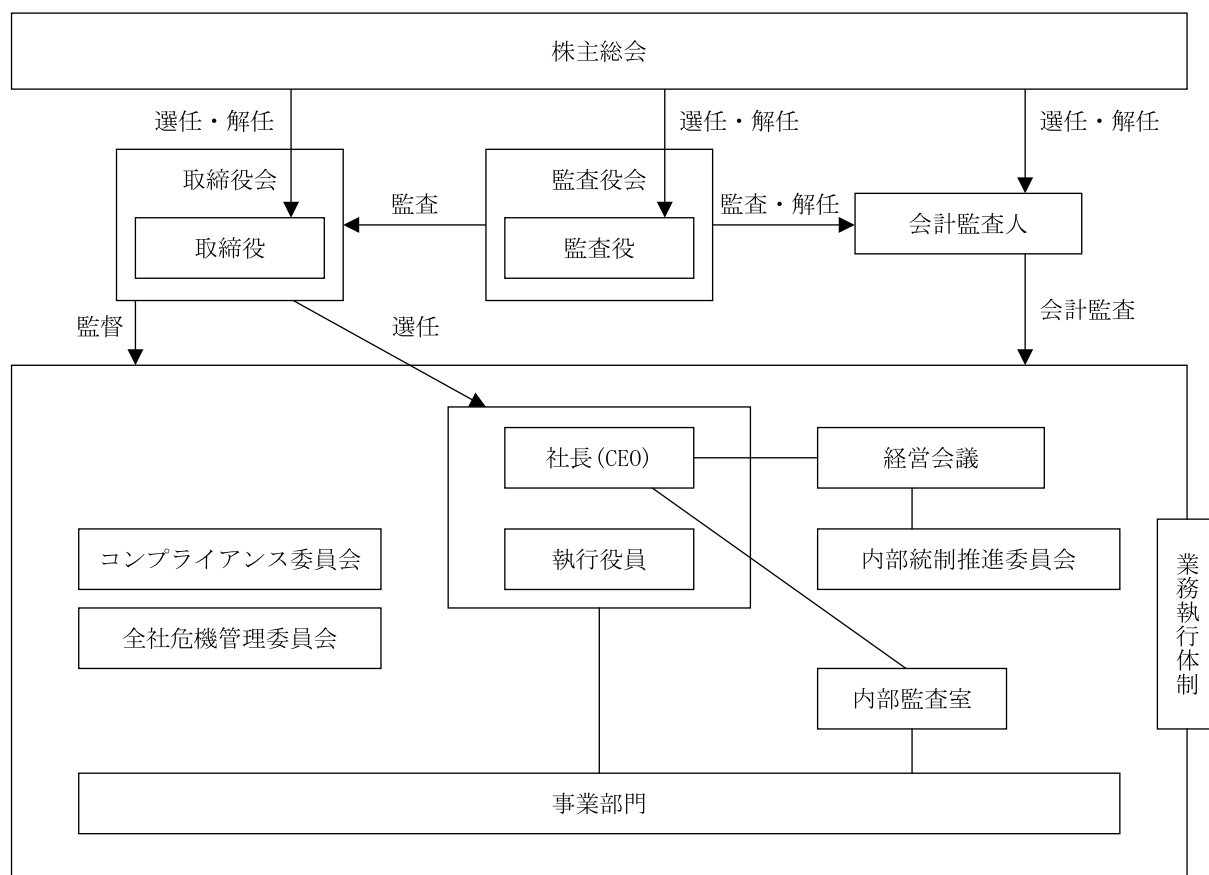
329

				()
	37 11 29	60 14 19		

		CEO
		SI ERP BI SI
		SI ERP BI
		CSR
		SI
	12	

(1)

IR



362

100

(1)

(2)

(3)

(4)

(5)

100

(1)

(2)

(3)

(4)

CSR

CSR

CSR

15

10

427

423

100

CSR

	()					
	88,494	65,369			23,125	6
	4,577	4,157			420	1
	20,178	17,928			2,250	2

23 24 28 300
 30
 10 30 15 40

11
663, 500

15

a

165

b

423

426

c

454

30

309

(2)

	()	()	()	()
	30		31	
	30		31	

(1) (51
 28)
 21 22 31
 22 23 31

(2) (38
 59)
 21 22 31
 22 23 31

193 (21
 22 31) (21 22 31)
 (22 23 31) (22 23)
 31)

(1)

()

	(22 31)	(23 31)
	285,293	295,863
	5,692,253	5,657,104
	83,272	225,783
	968,012	682,077
	73,720	67,344
	439,721	417,383
	690,000	
		1,820,000
	517,994	456,575
	1,057	4,087
	8,749,211	9,618,045
	1,146,652	1,095,463
	² 329,763	² 329,763
	813,535	789,209
	134,215	105,815
	¹ 2,424,166	¹ 2,320,252
	1,217,855	1,858,993
	490,312	290,780
	1,708,168	2,149,773
	³ 673,194	664,478
	476,735	506,831
	878,952	879,397
	26,218	25,065
	2,002,663	2,025,641
	6,134,998	6,495,667
	14,884,210	16,113,713

()

(22 31)

(23 31)

	1,352,335	1,783,698
	359,897	352,622
	42,353	244,031
	200,426	200,687
	1,625,710	1,766,127
		819,208
	677,013	120,491
	4,257,736	5,286,867
	590,573	570,593
	² 8,532	² 8,532
	1,049,084	1,215,116
	103,266	67,208
	1,751,457	1,861,451
	6,009,194	7,148,319
	1,390,957	1,390,957
	1,959,235	1,959,235
	5,216,542	5,310,868
	8,566,735	8,661,061
	115	87
	² 12,535	² 12,535
		682
	12,651	11,941
	295,629	292,390
	8,875,016	8,965,393
	14,884,210	16,113,713

()

	(21 22 31)	(22 23 31)
	27,714,064	27,100,764
	³ 23,250,634	³ 22,497,894
	4,463,429	4,602,870
	^{1, 2} 4,280,723	^{1, 2} 4,198,247
	182,706	404,623
	24,518	23,954
	5,959	7,411
		5,433
		7,343
	7,113	
	1,556	5,299
	39,147	49,441
	21,874	19,202
		5,782
	12,336	
	6,528	9,902
	40,738	34,886
	181,115	419,178
	31,695	
	31,695	
	212,810	419,178
	38,265	223,999
	70,134	
	34,746	7,763
	2,876	216,235
		202,942
	13,690	1,325
	196,244	204,268

	()
	()
	(21 22 31) (22 23 31)
	202,942
	40
	682
	² 722
	¹ 202,219
	203,558
	1,338

()

	(21 22 31)	(22 23 31)
	1, 390, 957	1, 390, 957
	1, 390, 957	1, 390, 957
	1, 959, 235	1, 959, 235
	1, 959, 235	1, 959, 235
	5, 240, 182	5, 216, 542
	219, 884	109, 942
	196, 244	204, 268
	23, 639	94, 326
	5, 216, 542	5, 310, 868
	8, 590, 375	8, 566, 735
	219, 884	109, 942
	196, 244	204, 268
	23, 639	94, 326
	8, 566, 735	8, 661, 061
	3, 300	115
	3, 415	27
	3, 415	27
	115	87
	12, 535	12, 535
	12, 535	12, 535

()

	(21 22 31)	(22 23 31)
		682
		682
		682
	9,235	12,651
	3,415	709
	3,415	709
	12,651	11,941
	289,942	295,629
	5,686	3,239
	5,686	3,239
	295,629	292,390
	8,889,553	8,875,016
	219,884	109,942
	196,244	204,268
	9,102	3,948
	14,537	90,377
	8,875,016	8,965,393

	(21 22 31)	(22 23 31)
	212,810	419,178
	1,237,556	1,289,526
	147,793	166,032
	25,080	24,313
	21,874	19,202
	1,175,047	298,813
	393,460	146,790
	35,134	41,227
	398,516	186,582
	152,410	88,961
	65,994	26,284
	2,511,406	2,658,286
	25,080	24,313
	21,946	19,205
	63,842	
	798,841	34,906
		293,641
	8,018	
	1,643,838	2,922,130
	32,589	16,839
	920,978	1,102,493
	191,528	227,429
	14,373	
	23,278	32,242
	9,091	8,959
	1,996	36,336
	1,114,539	1,287,143
	11,700	3,250
	381,887	389,272
	219,884	109,942
	613,471	502,464
	0	682
	84,172	1,131,839
	1,059,465	975,293
		8,731
	¹ 975,293	¹ 2,115,863

	(21 22 31)	(22 23 31)
	(1)	(1)
	(2)	
	(1)	(1)
	(2)	
		12 31
	(1)	(1)

	(21 22 31)	(22 23 31)
	(2)	(2)
) (
	()	
	(3)	(3)

	(21 22 31)	(22 23 31)
	(4)	(4)
	(5)	(5)
		(6)

(21 22 31)				(22 23 31)			
			15	18	20	31	
19 12 27			19 12	21	20	31	
27		18					
	287, 153						
		43, 201					
			19 20				
31							
	5, 010						

(21 22 31)	(22 23 31)
<p>100 10</p> <p>622</p> <p>100 10</p> <p>3 217</p>	<p>100 10</p> <p>3 217</p> <p>22 20 12 26</p> <p>21 24</p>

(21 22 31)	(22 23 31)
	<p>25 22 30</p>

()

(22 31)				(23 31)			
			2,583,467				2,961,087
			10 31				10 31
	34				34		
		13	31			13	31
19				19			
			10				10
31	119			31	119		
		14	31			14	31
			62,008				70,657
			8,731				

()

(21 22 31)	(22 23 31)
1, 594, 295 566, 985 85, 117 25, 342 38, 167 69, 184	1, 626, 862 520, 430 73, 310 38, 272 14, 114 990

()

(22 23 31)	
	199,659
	15,334
<hr/>	214,994
	5,060
<hr/>	5,060

()

21

22

31

()	78,530			78,530

(1)

21	23		219,884	2,800	21	31	21	24

(2)

22	24		109,942		1,400	22	31	22	25

22

23

31

()	78,530			78,530

(1)

22 24		109,942	1,400	22 31	22 25	

(2)

23 24		109,942	1,400	23 31	23 27	

()

(21 22 31)	(22 23 31)
285,293 690,000 <hr/> 975,293	295,863 1,820,000 <hr/> 2,115,863

()

(21 22 31)	(22 23 31)
(1) () () (2)	(1) () ()

()
(21 22 31)

(1)

(2)

11

(3)

	5, 692, 253	5, 692, 253	
	963	963	
	(1, 352, 335)	(1, 352, 335)	
	(950, 471)	(959, 790)	(9, 319)

*

()

	672, 231

	5, 692, 253					
	359, 897	282, 025	181, 477	101, 266	23, 307	2, 497

10

10

20

10

19

20

(22 23 31)

(1)

(2)

11

(3)

	5,657,104	5,657,104	
	1,820,000	1,820,000	
	978	978	
	(1,783,698)	(1,783,698)	
	(819,208)	(819,208)	
	(923,216)	(911,052)	(12,163)

*

()

	663,500

	5,657,104					
	1,820,000					

	352,622	253,605	173,445	93,379	38,814	11,347

()

22 31

		963	759	203
		963	759	203
		963	759	203

21 22 31

	14,373	7,113	
	14,373	7,113	

23 31

		978	759	218
		978	759	218
		978	759	218

22 23 31

()

(21 22 31)

(22 23 31)

()

	22	31	
			1, 048, 476
<hr/>			1, 048, 476
			607
<hr/>			1, 049, 084

	21	22	31
		167, 487	
		7, 882	
		80	
		95, 625	
<hr/>			270, 914
	+ + + + +		

	21	22	31
		2, 159	

	23	31	
			1, 220, 966
<hr/>			1, 220, 966
			5, 849
<hr/>			1, 215, 116

	22	23	31
			171, 416
			11, 225
			262
			101, 559
<hr/>			283, 939
	+ + + + +		

	22	23	31
			2 130

()

(21 22 31)	(22 23 31)
405	405
290,709	326,739
12,446	19,890
35,875	41,652
28,019	401
16,529	9,172
421,718	489,507
45,523	28,606
49,189	33,313
4,371	4,371
49,400	24,642
15,869	13,756
22,718	992,459
992,776	68,159
76,240	924,299
916,536	84
78	84
78	924,215
916,457	
40.5	40.5
()	()
23.7	1.6
36.7	4.8
8.5	4.4
8.9	3.5
3.7	51.6
0.2	
1.4	

()

(21 22 31)

21 22 31

21 22 31

90

(21 22 31)

(22 23 31)

)

(21 22 31)

(22 23 31)

(

27

20

21

17

21

20

(22 23 31)

(1)

90

(2)

90

()

	9,007,579	

(22 23 31)

(22 23 31)

(22 23 31)

(21 22 31)

(1)

() ()

					()					
										1,528,239
			239,644,544		65.2			8,389,326		259,444
					2.5					
								2,514,583		210,397

()

(1)

(2)

()

					()					
			4,000,000					1,140,939		656,191
					0.6					
			50,000					5,561,043		690,000
								5,741,043		

()

(1)

(2)

(2)
()

(1)

(2)

(1)

() ()

					()					
			239,644,544		65.2			8,410,850		1,820,283
					2.5					438,296
								2,477,395		179,509
			147,143,008		0.0			7,010,000		1,820,000
					67.7			5,190,000		

()

(1)

(2)

(3)

()

					()					
			4,000,000		0.6			1,059,688		187,180
								1,270,000		
								1,960,000		

()

(1)

(2)

(2)
()

(1)

(2)

()

	(21 22 31)	(22 23 31)
	109,249 79	110,441 91
	2,498 97	2,601 14
	196,244	204,268
	196,244	204,268
	78,530	78,530

22 29

23

23

IT

23

IT

22 29

22 29

23

22 29
 22 29
 23
 23

796

784

850,000,000

21 12 / 22

	580	
	1,250	1,390
	62 10 (42 29)	58
	1,300,000	78,530
	12 31	31
	1,578	1,332
	51% 49%	65.15%

22 24

	19 12	20 12	21 12
	6,768	7,303	5,732
	980	873	512

	350		1
	103		364
	453		365

21 12

	()	()	()	
	359, 897	352, 622		
()				
()	590, 573	570, 593		24 30 29 28
	950, 471	923, 216		

() 20 31

	253, 605	173, 445	93, 379	38, 814

(2)

	22 30	22 30	22 10 12 31	23 31
	5,465,306	7,302,400	6,145,775	8,187,282
()	451,403	101,843	56,812	711,926
()	270,283	63,654	35,953	374,943
()	3,441,79	810,58	457,83	4,774,52

(1)

	(22 31)	(23 31)
	38,802	47,810
	27,716	31,345
	² 5,094,065	² 4,948,852
	947,014	599,640
	74,310	68,039
	16,610	15,162
	1,377	322,701
	374,000	339,000
	690,000	
		² 1,820,000
	301,634	
	60,512	54,345
	1,000	1,000
	<u>7,625,045</u>	<u>8,245,896</u>
	1,135,388	1,086,173
	18	9
	109,238	82,289
	³ 329,763	³ 329,763
	<u>779,900</u>	<u>766,524</u>
	¹ 2,354,309	¹ 2,264,760
		833
	1,196,908	1,881,472
	451,926	254,075
	12,793	13,956
	63	22
	<u>17,455</u>	<u>17,455</u>
	<u>1,679,147</u>	<u>2,167,816</u>
	663,500	663,500
	440,731	440,731
	386,301	454,005
	244,000	261,000
	294,215	270,630
	50,928	41,428
	23,315	264
	11,296	10,043
	<u>2,091,695</u>	<u>2,121,515</u>
	<u>6,125,153</u>	<u>6,554,092</u>
	<u>13,750,198</u>	<u>14,799,989</u>

()

(22 31)

(23 31)

	² 1, 202, 275	² 1, 109, 511
	321, 543	316, 669
	220, 906	² 621, 083
	² 1, 390, 889	² 1, 534, 171
	41, 852	197, 645
	² 569, 765	² 815, 901
	² 442, 255	² 439, 966
	43, 943	58, 005
	1, 000	29
	4, 234, 431	5, 092, 984
	515, 908	523, 271
	³ 8, 532	³ 8, 532
	520, 553	648, 782
	99, 830	60, 450
	1, 144, 824	1, 241, 036
	5, 379, 256	6, 334, 020
	1, 390, 957	1, 390, 957
	1, 959, 235	1, 959, 235
	1, 959, 235	1, 959, 235
	67, 800	67, 800
	3, 530, 000	3, 530, 000
	1, 410, 413	1, 505, 440
	5, 008, 213	5, 103, 240
	8, 358, 406	8, 453, 433
	³ 12, 535	³ 12, 535
	12, 535	12, 535
	8, 370, 942	8, 465, 969
	13, 750, 198	14, 799, 989

	(21)		(22)	
	22	31	23	31
	1	23,864,205	1	23,208,122
	4	20,054,257	4	19,282,459
		3,809,948		3,925,662
	2 3	3,711,621	2 3	3,552,672
		98,326		372,990
	1	48,387	1	30,696
		4,802		5,125
				5,433
				7,343
		1,473		5,268
		54,664		53,868
		21,173		18,909
		3,217		
		3,062		7,981
		27,453		26,890
		125,537		399,968
		31,695		
		31,695		
		157,233		399,968
		17,000		177,000
		70,134		
		23,000		18,000
		30,134		195,000
		187,368		204,968

		(21 22 31)		(22 23 31)	
		()	()	()	()
		7,836,051	38.2	7,596,368	38.9
		7,167,530	34.9	6,464,475	33.1
		5,526,602	26.9	5,483,456	28.0
		20,530,184	100.0	19,544,300	100.0
		1,114,420		947,014	
		21,644,604		20,491,315	
		947,014		599,640	
		643,333		609,214	
		20,054,257		19,282,459	

()

	(21 22 31)	(22 23 31)
	896,853	1,146,127
	1,740,313	1,513,743
	1,065,764	940,179
	642,777	615,486
	555	6,271

	()
	()
	(21 22 31) (22 23 31)
	1,390,957
	1,390,957
	1,390,957
	1,390,957
	1,959,235
	1,959,235
	1,959,235
	1,959,235
	1,959,235
	1,959,235
	1,959,235
	67,800
	67,800
	67,800
	67,800
	3,530,000
	3,530,000
	3,530,000
	3,530,000
	1,442,929
	1,410,413
	219,884
	109,942
	187,368
	204,968
	32,515
	95,026
	1,410,413
	1,505,440

()

	(21 22 31)	(22 23 31)
	5,040,729	5,008,213
	219,884	109,942
	187,368	204,968
	32,515	95,026
	5,008,213	5,103,240
	8,390,922	8,358,406
	219,884	109,942
	187,368	204,968
	32,515	95,026
	8,358,406	8,453,433
	12,535	12,535
	12,535	12,535
	12,535	12,535
	12,535	12,535
	8,403,458	8,370,942
	219,884	109,942
	187,368	204,968
	32,515	95,026
	8,370,942	8,465,969

	(21 22 31)	(22 23 31)
	()	

	(21 22 31)	(22 23 31)
	(1)	(1)
	(2)	(2)
	(3)	(3)
	(1)	(1)

(21 22 31)	(22 23 31)
15	18 20 31
19 12 27	21 20 31
27	
287,153	
43,201	
18 19 12	
19 20 31	
5,010	

(21 22 31)	(22 23 31)
100 10	
508	
	100 10
	2,032

()

(22 31)			(23 31)		
		2,451,046			2,824,900
		1,553,940			1,827,554
		340,499			1,820,000
		400,000			325,955
		219,565			435,472
		259,444			187,447
		10			438,328
		31			400,000
34		10	34	10	31
	13	31		13	31
19			19		
		10			10
31	119		31	119	
		14			14
		31			31
		62,003			70,657

()

(21 22 31)		(22 23 31)	
	8,425,566		8,443,908
	24,300		6,750
	1,348,389		1,366,096
	490,913		439,517
	74,762		61,447
	23,090		35,625
	238,869		253,515
	122,822		112,103
	4,119		329,428
	38,167		4,446
50.5	38,167	52.4	14,114
	68,879		990

()

21 22 31

22 23 31

()

(21 22 31)	(22 23 31)
(1) () ()	(1) () ()

()

(22 31)

	440,731		
	440,731		

()

(23 31)

	440,731		
	440,731		

()

()

(21 22 31)	(22 23 31)
()	()
405	405
234,900	270,135
13,579	20,262
31,185	37,260
27,896	401
16,529	9,172
207,664	259,597
40,431	24,482
43,745	26,310
4,371	4,371
49,400	5,600
17,722	
<hr/>	<hr/>
687,827	657,995
<hr/>	<hr/>
69,827	57,995
<hr/>	<hr/>
618,000	600,000
<hr/>	<hr/>
618,000	600,000
<hr/>	<hr/>
40.5	40.5
()	()
32.7	2.8
49.7	4.2
9.7	4.3
10.8	2.6
5.0	
2.8	<hr/>
<hr/>	48.8
19.2	

()

	(21 22 31)	(22 23 31)
	106,595 47	107,805 53
	2,385 94	2,610 6
	187,368	204,968
	187,368	204,968
	78,530	78,530

22 29

23

23

IT

23

IT

22 29

22 29

23

22 29
 22 29
 23
 23

796

784

850,000,000

21 12 / 22

	580	
	1,250	1,390
	62 10 (42 29)	58
	1,300,000	78,530
	12 31	31
	1,578	1,332
	51% 49%	65.15%

22 24

	19 12	20 12	21 12
	6,768	7,303	5,732
	980	873	512

	350		1
	103		364
	453		365

21 12

			100	5,500
			100	5,000
			3,500	28,000
			310	18,500
			60	0
		MH Preferred Capital 1 (Cayman) Limited	500	500,000
			10	500
			20	0
			190	95,000
			7	0
			220	11,000
			5,017	663,500
			5,017	663,500

	()	()	()	()	()	()	()
	2,738,892	20,096	2,200	2,756,788	1,670,614	69,094	1,086,173
	920			920	910	9	9
	436,044	8,085	24,288	419,840	337,551	34,232	82,289
	329,763			329,763			329,763
	1,299,735	338,963	56,350	1,582,347	815,823	352,339	766,524
		28,181	28,181				
	4,805,355	395,326	111,021	5,089,660	2,824,900	455,676	2,264,760
	1,600	1,000		2,600	1,766	166	833
	4,381,058	1,321,538	1,400	5,701,197	3,819,724	636,747	1,881,472
	451,926	615,486	813,337	254,075			254,075
	20,538	5,809		26,348	12,391	4,646	13,956
	816			816	793	40	22
	17,455			17,455			17,455
	4,873,395	1,943,834	814,737	6,002,492	3,834,675	641,601	2,167,816
	1,186,491	236,564	19,790	1,403,266	949,260	149,070	454,005

()

338,963
568,133
565,617
187,787
512,184
103,301
211,898

	()	()	() ()	() ()	()
	12,296	30	1,282		11,043
	99,830	35,625	75,005		60,450

(2)

a

	()
	289
	37,403
	10,109
	6
	47,520
	47,810

b

()

	()
	28,300
	2,467
	577
	31,345

()

	()
23	13,600
	17,745
	31,345

c
()

	()
	1, 820, 283
	340, 275
	187, 180
	150, 991
	123, 908
	2, 326, 213
	4, 948, 852

()

() ()	() ()	() ()	() ()	() $\frac{()}{() ()} \times 100$	() $\frac{() ()}{()}$ 365
5, 094, 065	24, 325, 579	24, 470, 792	4, 948, 852	83.2	75.3

d

	()
	599, 640
	599, 640

e

	()
	68, 039
	68, 039

f

	()
	1, 820, 000
	1, 820, 000

a

	()
	325, 415
	57, 936
	41, 352
	34, 141
	26, 687
	623, 977
	1, 109, 511

b

	()
	667, 000
	558, 530
	79, 403
	229, 237
	1, 534, 171

c

	()
	438, 296
	53, 130
	30, 104
	29, 591
	23, 789
	240, 989
	815, 901

(3)

	31
	31
	30 31
	33
	http://www.jfe-systems.com/ir/houtei.html

24

(1)	(27)	21 22	31	22	24
(2)	(27)	21 22	31	22	24
(3)	21 (27)	22	31	23	24
(4)	28	22 22	30	22	12
	28	22	30	22	11 12
	28	22	10 30	23	14
		22	12 31		
(5)			19	22	29
			19	22	29

24

23 24

JFE Systems, Inc.

()

24

23 24

JFE Systems, Inc.

()

28 (22 23 31)