

Smart Work, Heartful Smiles.

JFE Systems, Inc.



**SMART+
HEARTFUL IT**
スマートフル



Smart Work, Heartful Smiles.

JFE Systems, Inc. is a systems integrator established in 1983 as a spin-off from the Information Systems Department of Kawasaki Steel (now JFE Steel Corporation). Over the past 40 years, we have been providing comprehensive services – including planning, design, development, maintenance and operations of corporate information systems – to support our customers in achieving business innovations.

During this period, after succeeding from EXA Corporation to the application development and maintenance businesses for JFE Steel and JFE Group member companies, the entire Group, including JFE ComService Co., Ltd. and IAF Consulting Inc., employs approximately 1,800 individuals. Total net sales for the Group are 62.0 billion yen.

A Customer-Oriented Spirit

With our motto “Smart Work, Heartful Smiles.”, we strive to achieve the following:

- Provide the best possible solutions through intimate communications with customers to grasp the true nature of the challenges they face
- Present proposals based on a corporate management perspective and provide timely support to customers in their business innovations
- As well as building systems, support customers in fully exploiting such systems to achieve their goals

This customer-oriented spirit is the starting point of all our business activities.

Experience as an “In-House” Enterprise Systems Integrator

Our growth is due to our rich experience in systems development and operations services for JFE Steel, which involved tackling various technology innovations and quality improvements to maintain mission-critical operations 24 hours a day, 365 days a year. Of these, the Steelworks System Renovation Project, a project currently underway to integrate the backbone systems of all JFE Steel production facilities in Japan, including four steelworks, is the first large-scale project of its kind in the domestic manufacturing industry with the goal of applying the Internet of things (IoT) and other digital technologies to cut lead times and improve quality.

We’re expanding our business based on the technologies accumulated and expertise gained during this process. We currently provide systems that boost the efforts of our customers in various fields, including the automobile industry, process manufacturing industry, and other sectors including logistics, and food products.

Original Products

Drawing on our extensive experience with building core systems for a broad range of customers, we have created packages for peripheral systems, usually developed from scratch, which has led to an extensive lineup of proprietary solutions.

With over twenty years of experience in the product business, we currently provide a broad and wide-ranging lineup of package products, including cost management systems and procurement systems based on our experience in systems construction for JFE Steel, and electronic document solutions and food product quality information systems based on infrastructure and database technologies.

Providing Total ERP Solutions

We provide total solutions by drawing on ERP product combinations to support innovation among our customers. Our experts combine ERP as a core system and our proprietary products as building blocks to construct highly usable, highly effective systems in line with customer business processes.

JFE Systems will continue to be a trusted partner, providing new value and greater satisfaction to its customers through information systems expertise.

President & CEO

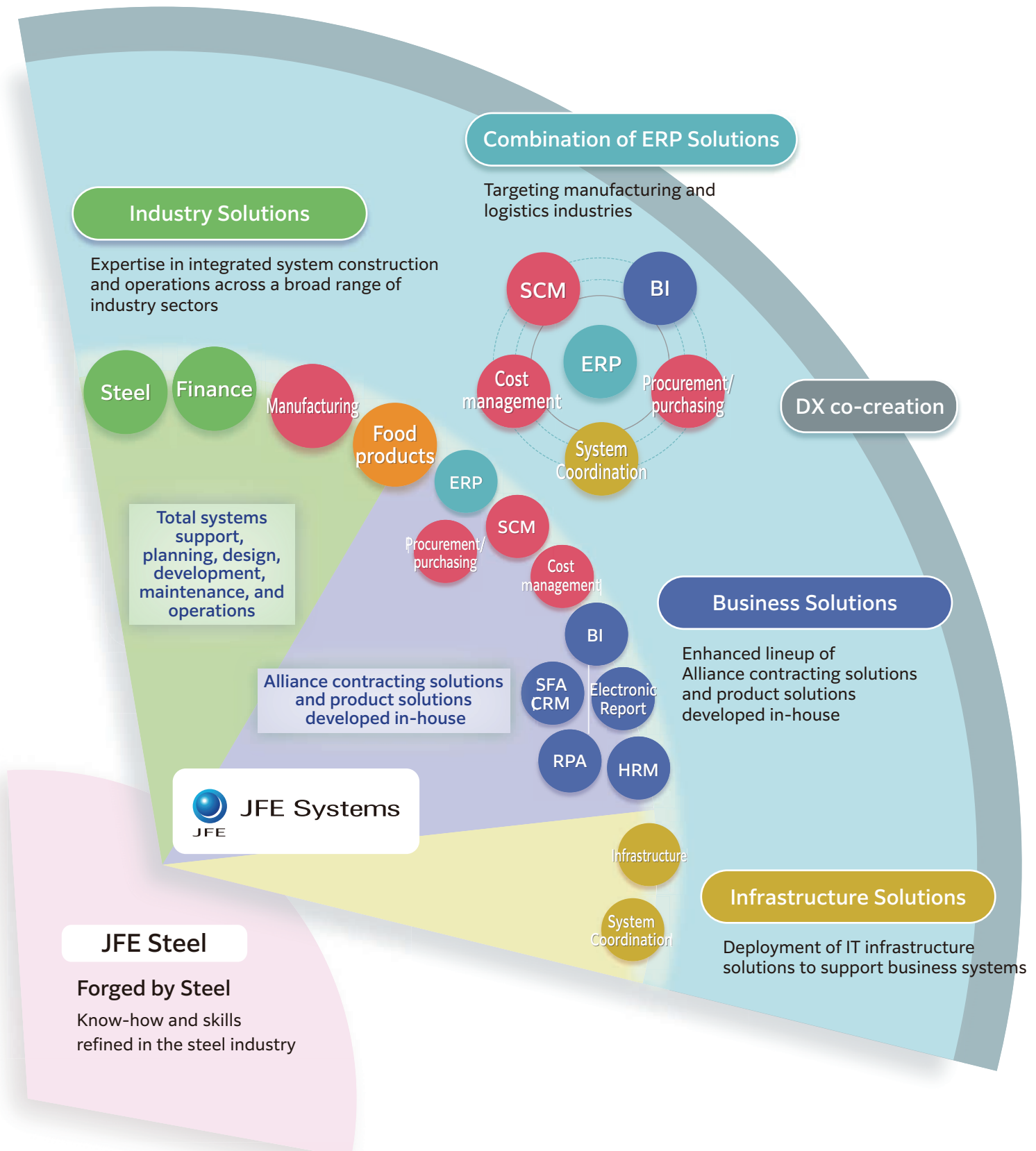
Tetsuo Oki



SOLUTIONS LINEUP

Our lineup of solutions includes solutions in the following four areas: combined ERP solutions, industry solutions, business solutions, and infrastructure solutions.

We further seek to draw on Digital transformation(DX) co-creation.



NOTE: Products in bold were developed in-house.

Manufacturing solution

Digital Manufacturing

SCM/S&OP

- Kinaxis® RapidResponse
- SAP® Business Planning and Consolidation

Data Science/AI

- Optimization, Forecasting

Digital Twin

- Decision Intelligence

Cost management

- J-CCORES®**

Purchasing/Procurement

For manufacturers

- J-PROCURE®**

Online purchasing

- Enterprise Commerce
- J-Commerce@SaaS®**

Food Industry Solutions

Integrated products data management

- Mercrus®**

Formula/food additive regulation management

- Quebel®**

Cloud Services

- MerQurius Net®**
- Mercrus Cloud®**
- MerQurius® Cloud**
- AI Proofing Tool P2Ai

MerQurius entry-level model

- MerQurius® Entry Edition**

DX co-creation

- Digital workplace solution
- Digital Manufacturing solution
- Platform development

ERP Solutions

- SAP® S/4HANA
- Microsoft Dynamics 365

+

SIDEROS®
Template Series

Business Solutions

BI

- SAP® BusinessObjects™
- SAP® Analytics Cloud
- KPIMart®**
- Power BI
- Tableau®

SFA/CRM

- Salesforce®

RPA

- UiPath®

HRM

- POSITIVE®
- STAFFBRAIN®
- J-Forpe®**
- SKILL NOTE®

Electronic Report

- FiBridge® II**
- FileVolante®**
- DataDelivery®**

Infrastructure Solutions

Infrastructure/Cloud computing

- JGranz® series**

System Linkage

EAI
EC/EDI

- IBM® Sterling B2B Integrator
- IBM® Sterling Gentran
- ACMS series

File transfer

- IBM® Connect:Direct

All Industries

Systems integration and consulting for customers in any and all industries and sectors

BUSINESS DOMAIN

In addition to systems integration (SI), which involves the planning, design, development, operation, and maintenance of information systems, the Company and the JFE Systems Group pursue business activities in the domains of systems development based on our own products and alliance solutions, as well as IT infrastructure solutions to support business systems.

- **Business Solution & Software**

Systems integration involving products developed in-house and solutions based on alliance agreements with other companies

- **Enterprise System Integration**

Business systems integration specializing in industries and fields tailored to the diverse business needs of clients

- **Businesses Supporting the Steel Industry**

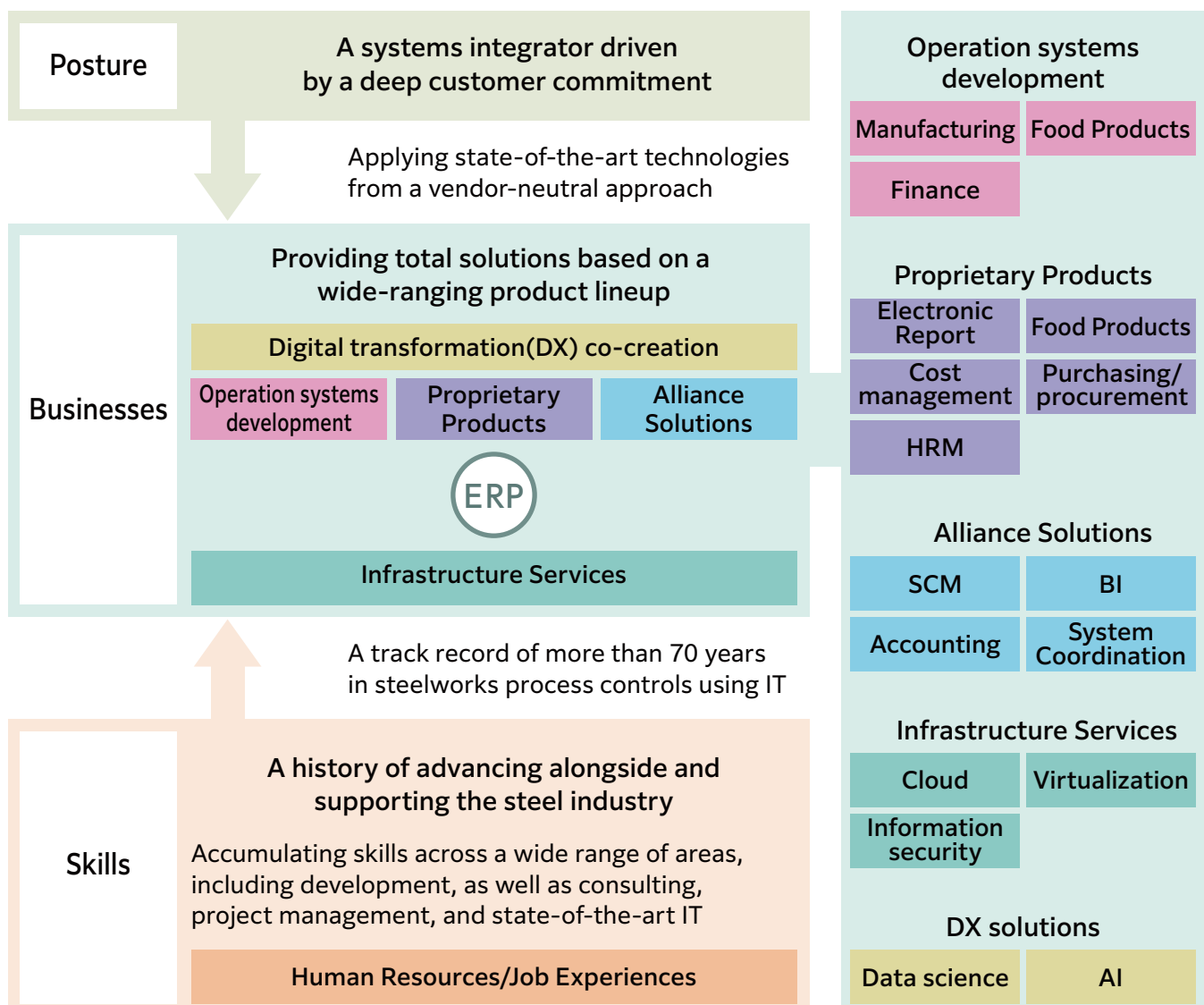
Business systems integration for JFE Steel Corporation and its group companies

- **Infrastructure Services**

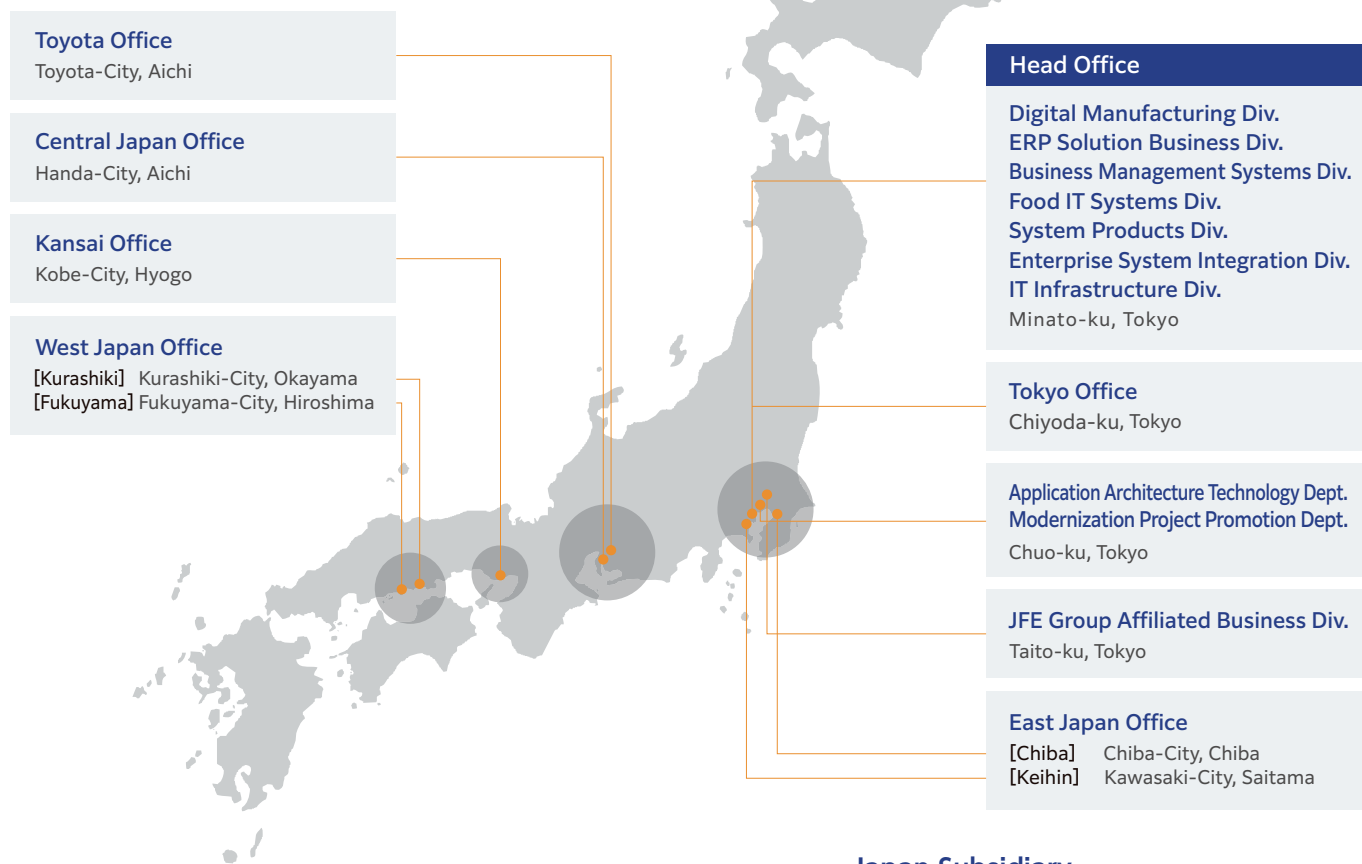
Developing and operating information and telecommunications infrastructures and delivering IT infrastructure solutions based on these infrastructures

- **DX**

Promotion of the DX business in collaboration with businesses supporting the steel industry and other business areas



Office Information



Japan Subsidiary

JFE ComService Co., Ltd.
Taito-ku, Tokyo

IAF Consulting, Inc.
Chuo-ku, Tokyo

Office Locations

| | | |
|--|---|------------------------------------|
| Head Office | Seavans South Building 18F, 1-2-3 Shibaura, Minato-ku, Tokyo 105-0023 | TEL:+81-3-5418-2400 (reception) |
| Tokyo Office | Hibiya Kokusai Building, 2-2-3 Uchisaiwaicho, Chiyoda-ku, Tokyo 100-0011 | TEL:+81-3-3597-3767 |
| Application Architecture Technology Dept. | Ginza Ohno Building 7F, 4-1-17, Tsukiji, Chuo-ku, Tokyo 104-0045 | TEL:+81-3-3549-0633 |
| Modernization Project Promotion Dept. | Ginza Ohno Building 7F, 4-1-17, Tsukiji, Chuo-ku, Tokyo 104-0045 | TEL:+81-3-3549-0633 |
| JFE Group Affiliated Business Div. | JFE Kuramae Building, 2-17-4, Kuramae, Taito-ku, Tokyo 111-0051 | TEL:+81-3-5822-6350 |
| East Japan Office (Chiba Area) | JFE Steel's East Japan Works, 1-banchi, Kawasaki-cho, Chuo-ku, Chiba-City, Chiba 260-0835 | TEL:+81-43-262-2686 |
| East Japan Office (Keihin Area) | Keihin Building 4F, 1-1, Minamiwatarida-cho, Kawasaki-ku, Kawasaki-City, Kanagawa 210-0855 | TEL:+81-44-322-6632 |
| Toyota Office | Kearny Place Toyota 8F, 2-31, Wakamiya-cho, Toyota-City, Aichi 471-0026 | TEL:+81-565-31-3533 |
| Central Japan Office | JFE Steel's Chita Works, 1-1 Kawasaki-cho, Handa-City, Aichi 475-8611 | TEL:+81-569-24-2230 |
| Kansai Office | Kobe Commerce, Industry and Trade Center Building 9F, 5-1-14, Hamabe-dori, Chuo-ku, Kobe-City, Hyogo 651-0083 | TEL:+81-78-232-5755 |
| West Japan Office (Kurashiki Area) | JFE Steel's West Japan Works, 1-chome, Mizushima Kawasaki-dori, Kurashiki-City, Okayama 712-8514 | TEL:+81-86-447-4343 |
| West Japan Office (Fukuyama Area) | JFE Steel's West Japan Works, 1-banchi, Kokan-cho, Fukuyama-City, Hiroshima 721-0931 | TEL:+81-84-943-1422 |



JFE Systems, Inc.



<https://www.jfe-systems.com/>



Overview

| | |
|----------------------------|--|
| Company Name | JFE Systems, Inc. |
| Established | September 1, 1983 |
| Capital | 1.39 billion JPY |
| Sales | Consolidated: 62.0 billion JPY (FY2023) |
| Number of Employees | Consolidated: 1,864 (As of March 31, 2024) Non-consolidated: 1,529 (As of March 31, 2024) |
| Listed | Tokyo Stock Exchange Standard Market (securities code: 4832) |
| Head office | Minato Ward, Tokyo |
| Main shareholders | JFE Steel Corporation (65.16%) |
| Business | Information systems integration, operations and maintenance, etc. |
| Japan Subsidiary | JFE ComService Co., Ltd. IAF Consulting, Inc. |

Corporate History

| | |
|------------------|--|
| Sep. 1983 | Kawasaki Steel Systems Development Corporation (now JFE Systems, Inc.) established |
| Apr. 1986 | Merged with Head Office System Department of Kawasaki Steel Corporation (now JFE Steel Corporation) |
| Oct. 1988 | Merged with Factory System Department of Kawasaki Steel Corporation (now JFE Steel Corporation) |
| Oct. 1994 | Merged with Systems Electronics Division (Information & Telecommunications Business and Electronics Device Business) of Kawasaki Steel Corporation (now JFE Steel Corporation) |
| Oct. 1998 | Acquired Privacy Mark certification |
| Mar. 2000 | Acquired ISO 9001 certification |
| Mar. 2001 | Listed on Second Section of Tokyo Stock Exchange |
| Apr. 2002 | Kawasho Information Technology Co., LTD. (JFE ComService Co., Ltd.) has become our subsidiary company. |
| Dec. 2004 | Company name changed to JFE Systems, Inc. |
| Apr. 2011 | Applications development and maintenance operations for JFE Steel and its group companies transferred from EXA Corporation |
| Apr. 2019 | IAF Consulting, Inc. has become our subsidiary company. |
| Apr. 2022 | Moved to the Standard Market through reorganization of Tokyo Stock Exchange markets |

Management

Directors

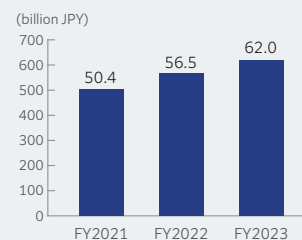
| | | | |
|----------------------|-----------------|-------------------------|----------------|
| President & Director | Tetsuo Oki | | |
| Director | Makoto Kuniyasu | Director (non-standing) | Toshiro Takeda |
| Director | Jun Shimoda | Director (non-standing) | Masayo Hobo |
| Director | Hitoshi Sasai | | |

Executive Officers

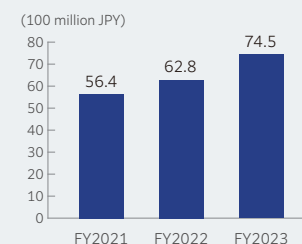
| | | | |
|----------------------------|------------------|-------------------|------------------|
| CEO | Tetsuo Oki | | |
| Managing Executive Officer | Makoto Kuniyasu | Executive Officer | Tetsuya Tamura |
| Managing Executive Officer | Jun Shimoda | Executive Officer | Yasuki Sakagami |
| Managing Executive Officer | Hitoshi Sasai | Executive Officer | Yoshihiro Misawa |
| Managing Executive Officer | Tetsuya Morimoto | Executive Officer | Hiroki Horibe |
| Managing Executive Officer | Jun Ikuta | Executive Officer | Takashi Watanabe |
| Managing Executive Officer | Yukio Arai | Executive Officer | Takehiro Yazaki |
| Managing Executive Officer | Hiroyuki Mori | Executive Officer | Taku Shibata |
| Managing Executive Officer | Toshio Nakayama | | |
| Managing Executive Officer | Motoshi Nakamura | | |

Operating Results

Consolidated Net Sales



Consolidated Ordinary Income



Organizational Chart



Office Locations

| | | |
|--|---|---------------------------------|
| Head Office | Seavans South Building 18F, 1-2-3 Shibaura, Minato-ku, Tokyo 105-0023 | TEL:+81-3-5418-2400 (reception) |
| Tokyo Office | Hibiya Kokusai Building, 2-2-3 Uchisaiwaicho, Chiyoda-ku, Tokyo 100-0011 | TEL:+81-3-3597-3767 |
| Application Architecture Technology Dept. | Ginza Ohno Building 7F, 4-1-17, Tsukiji, Chuo-ku, Tokyo 104-0045 | TEL:+81-3-3549-0633 |
| Modernization Project Promotion Dept. | Ginza Ohno Building 7F, 4-1-17, Tsukiji, Chuo-ku, Tokyo 104-0045 | TEL:+81-3-3549-0633 |
| JFE Group Affiliated Business Div. | JFE Kuramae Building, 2-17-4, Kuramae, Taito-ku, Tokyo 111-0051 | TEL:+81-3-5822-6350 |
| East Japan Office (Chiba Area) | JFE Steel's East Japan Works, 1-banchi, Kawasaki-cho, Chuo-ku, Chiba-City, Chiba 260-0835 | TEL:+81-43-262-2686 |
| East Japan Office (Keihin Area) | Keihin Building 4F, 1-1, Minamiwatarida-cho, Kawasaki-ku, Kawasaki-City, Kanagawa 210-0855 | TEL:+81-44-322-6632 |
| Toyota Office | Kearny Place Toyota 8F, 2-31, Wakamiya-cho, Toyota-City, Aichi 471-0026 | TEL:+81-565-31-3533 |
| Central Japan Office | JFE Steel's Chita Works, 1-1 Kawasaki-cho, Handa-City, Aichi 475-8611 | TEL:+81-569-24-2230 |
| Kansai Office | Kobe Commerce, Industry and Trade Center Building 9F, 5-1-14, Hamabe-dori, Chuo-ku, Kobe-City, Hyogo 651-0083 | TEL:+81-78-232-5755 |
| West Japan Office (Kurashiki Area) | JFE Steel's West Japan Works, 1-chome, Mizushima Kawasaki-dori, Kurashiki-City, Okayama 712-8514 | TEL:+81-86-447-4343 |
| West Japan Office (Fukuyama Area) | JFE Steel's West Japan Works, 1-banchi, Kokan-cho, Fukuyama-City, Hiroshima 721-0931 | TEL:+81-84-943-1422 |