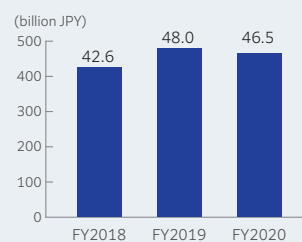


Overview

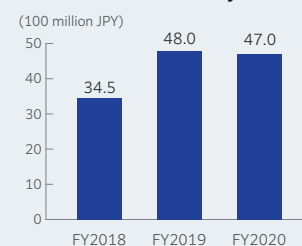
Company Name	JFE Systems, Inc.
Established	September 1, 1983
Capital	1.39 billion JPY
Sales	Consolidated: 46.5 billion JPY (FY2020)
Number of Employees	Consolidated: 1,839 (As of March 31, 2021) Non-consolidated: 1,522 (As of March 31, 2021)
Listed	Tokyo Stock Exchange Second Section (securities code: 4832)
Head office	Minato Ward, Tokyo
Main shareholders	JFE Steel Corporation (65.16%)
Business	Information systems integration, operations and maintenance, etc.
Japan Subsidiary	JFE ComService Co., Ltd. IAF Consulting, Inc.

Operating Results

Consolidated Net Sales



Consolidated Ordinary Income



Corporate History

Sep. 1983	Kawasaki Steel Systems Development Corporation (now JFE Systems, Inc.) established
Apr. 1986	Merged with Head Office System Department of Kawasaki Steel Corporation (now JFE Steel Corporation)
Oct. 1988	Merged with Factory System Department of Kawasaki Steel Corporation (now JFE Steel Corporation)
Oct. 1994	Merged with Systems Electronics Division (Information & Telecommunications Business and Electronics Device Business) of Kawasaki Steel Corporation (now JFE Steel Corporation)
Oct. 1998	Acquired Privacy Mark certification
Mar. 2000	Acquired ISO 9001 certification
Mar. 2001	Listed on Second Section of Tokyo Stock Exchange
Apr. 2002	Kawasho Information Technology Co., LTD. (JFE ComService Co., Ltd.) has become our subsidiary company.
Dec. 2004	Company name changed to JFE Systems, Inc.
Apr. 2011	Applications development and maintenance operations for JFE Steel and its group companies transferred from EXA Corporation
Apr. 2019	IAF Consulting, Inc. has become our subsidiary company.

Management

Directors

President & Director	Tetsuo Oki
Director	Tomio Sasaki
Director	Keita Harada
Director	Makoto Kuniyasu
Director	Hajime Nakamura
Director	Jun Shimoda
Director (non-standing)	Takateru Kobayashi
Director (non-standing)	Yukio Arai
Director (non-standing)	Seigo Yano

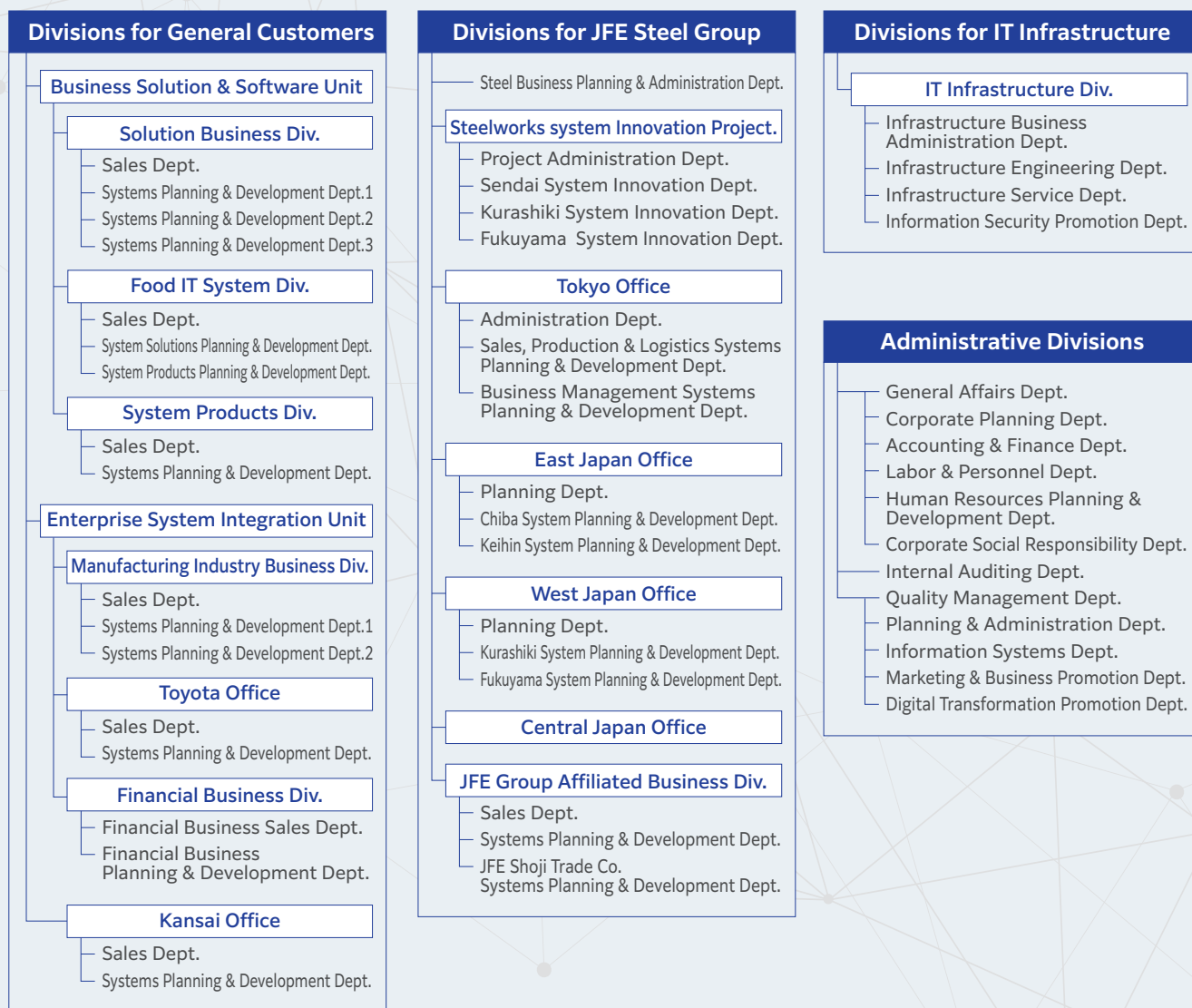
Auditors

Corporate Auditor	Takehiro Matsui
Corporate Auditor (non-standing)	Sei Uda
Corporate Auditor (non-standing)	Hirokazu Inenaga

Executive Officers

CEO	Tetsuo Oki
Managing Executive Officer	Tomio Sasaki
Managing Executive Officer	Keita Harada
Managing Executive Officer	Makoto Kuniyasu
Managing Executive Officer	Hajime Nakamura
Managing Executive Officer	Jun Shimoda
Managing Executive Officer	Atsumi Okuno
Managing Executive Officer	Tetsuya Funao
Managing Executive Officer	Hitoshi Sasai
Managing Executive Officer	Tetsuya Morimoto
Executive Officer	Akira Sugihara
Executive Officer	Jun Ikuta
Executive Officer	Hiroyuki Mori
Executive Officer	Toshio Nakayama
Executive Officer	Motoshi Nakamura

Organizational Chart (2021.4)



Office Locations

Head Office	Seavans South Building 18F, 1-2-3 Shibaura, Minato-ku, Tokyo 105-0023	TEL:+81-3-5418-2400
	Solution Business Div. TEL:+81-3-5418-2436	Food IT Systems Div. TEL:+81-3-5418-2375
	System Products Div. TEL:+81-3-5418-2377	Manufacturing Industry Business Div. TEL:+81-3-5418-2439
	Financial Business Div. TEL:+81-3-5418-2430	IT Infrastructure Div. TEL:+81-3-5418-2340
Tokyo Office	Bussan Building 4F, 1-4-14 Nishishimbashi, Minato-ku, Tokyo 105-0003	TEL:+81-3-5418-2321
Steelworks system Innovation Project	Ginza Ohno Building 7F, 4-1-17, Tsukiji, Chuo-ku, Tokyo 104-0045	TEL:+81-3-3549-0633
JFE Group Affiliated Business Div.	JFE Kuramae Building, 2-17-4, Kuramae, Taito-ku, Tokyo 111-0051	TEL:+81-3-5822-6350
East Japan Office (Chiba Area)	JFE Steel's East Japan Works, 1-banchi, Kawasaki-cho, Chuo-ku, Chiba-City, Chiba 260-0835	TEL:+81-43-262-2686
East Japan Office (Keihin Area)	Keihin Building 4F, 1-1, Minamiwatarida-cho, Kawasaki-ku, Kawasaki-City, Kanagawa 210-0855	TEL:+81-44-322-6632
Toyota Office	Kearny Place Toyota 8F, 2-31, Wakamiya-cho, Toyota-City, Aichi 471-0026	TEL:+81-565-31-3533
Central Japan Office	JFE Steel's Chita Works, 1-1 Kawasaki-cho, Handa-City, Aichi 475-8611	TEL:+81-569-24-2230
Kansai Office	Kobe Commerce, Industry and Trade Center Building 9F, 5-1-14, Hamabe-dori, Chuo-ku, Kobe-City, Hyogo 651-0083	TEL:+81-78-232-5755
West Japan Office (Kurashiki Area)	JFE Steel's West Japan Works, 1-chome, Mizushima Kawasaki-dori, Kurashiki-City, Okayama 712-8514	TEL:+81-86-447-4343
West Japan Office (Fukuyama Area)	JFE Steel's West Japan Works, 1-banchi, Kokan-cho, Fukuyama-City, Hiroshima 721-0931	TEL:+81-84-943-1422