



**SMART+HEARTFUL IT**  
スマートフル

Smart Work,  
Heartful Smiles.

# COMPANY BROCHURE



JFE Systems, Inc.



# Smart Work, Heartful Smiles.

As we shift from an age centered on business organizations to one centered on people, the need has emerged for IT to enable workers to devote themselves to working creatively, while also focusing on accuracy and efficiency. We call this "Smartful (Smart + Heartful) IT."

JFE Systems, as IT professionals, places great importance on human connections, and with the power of Smartful IT, we aim to bring about a sense of "We can achieve it!" to the world.



JFE Systems



SMART + HEARTFUL IT  
スマートフル

Our Corporate  
Philosophy





## **During this period of transformation, we remain committed to building a future alongside our customers, guided as always by our purpose.**

For some 70 years, including the years in which we were a systems division of Kawasaki Steel (now JFE Steel), we have built, operated, and maintained production and operations management systems for steel mills, including both large-scale mission-critical production facilities and core head office systems.

With strengths accumulated over many years of experience in consulting, systems design and development, and project management, we provide IT solutions that integrate business systems development, IT infrastructure construction, and in-house development and alliance products for customers in the manufacturing industry and other sectors.

Yet another strength of ours is the value we place on partnerships, always taking a long-term perspective and building relationships of trust with customers. We propose systems that look to the future—based on goals that go beyond efficiency increases through IT—and strive to achieve long-term development alongside our customers.

With accelerating DX, AI innovations, expanding cloud services, stronger cybersecurity measures, and GX promotions, the IT industry is going through an unprecedented period of transformation. The issues facing customers and society are growing more complex. To remain the best possible partner for our customers, we will help customers and society achieve their goals by providing IT services based on our purpose “Smart Work, Heartful Smiles.”

**Tetsuo Oki**

President and CEO







# Bringing steel-industry technologies and to customers and society at large

For nearly 70 years, including the years in which we were a systems division of Kawasaki Steel (now JFE Steel), JFE Systems has provided support for building, operating, and maintaining production and operations management systems for steel mills and core head office systems (sales, production, logistics, management).

Technological innovation marks our history of growth over the years in which we've introduced new IT technologies to JFE Steel and continued to absorb and integrate peripheral technologies.

We provide customers in manufacturing and other sectors with the skills we've cultivated in consulting, systems design and development, project management, and IT infrastructure construction in order to meet the expectations of customers and of society.

Our Strengths



# Valuing good relationships to create a long-term future together

Building long-term relationships of trust with customers is at the heart of JFE Systems' corporate guidelines.

Based on trusting relationships with customers, we propose IT solutions based on a deep understanding of the customer's culture, businesses, and needs derived through ongoing dialogue.



## Storehouse of technologies to meet the strict requirements of the steel industry

At steel mills that operate 24 hours a day, 365 days a year, even a minor system shutdown can have major ramifications. JFE Systems has strengths in building large-scale, mission-critical systems and utilizing operations data at an advanced level (DX).



## Valuing dialogue to understand the customer's corporate culture, businesses, and needs

We propose IT solutions based on a deep understanding of the customer's company derived from ongoing dialogue with the customer.

In particular, in the industrial solutions business, we develop tailored solutions premised on a deep understanding of specific domains of customers in the manufacturing industry.



## Diverse solution lineup with ERP at the core

We offer a diverse solution lineup by incorporating progressive solutions from inside and outside Japan and conducting proprietary development when a solution is not available on the market.

With ERP at the core, we propose solutions that integrate peripheral systems.



## System proposals with a view to the future, based on long-term relationship-building

As a systems integrator originating from a user division, we have a strongly rooted culture of valuing long-term relationships with customers. We propose future-proof systems based on the assumption of sustainable system construction and operation.



## High quality and reliable support system

We maintain a quality manual based on ISO 90001, an international standard related to quality management systems, and define rules and standards for the development process.

We have also established a proprietary quality management system and development models as part of our continual efforts to raise quality.





## Combining diverse domains for a new approach to customer and societal issues

In order to respond to customer and societal issues, which grow more complex by the day, no single viewpoint or technology is sufficient to provide a solution. The key is an approach that combines differing fields and technological domains.

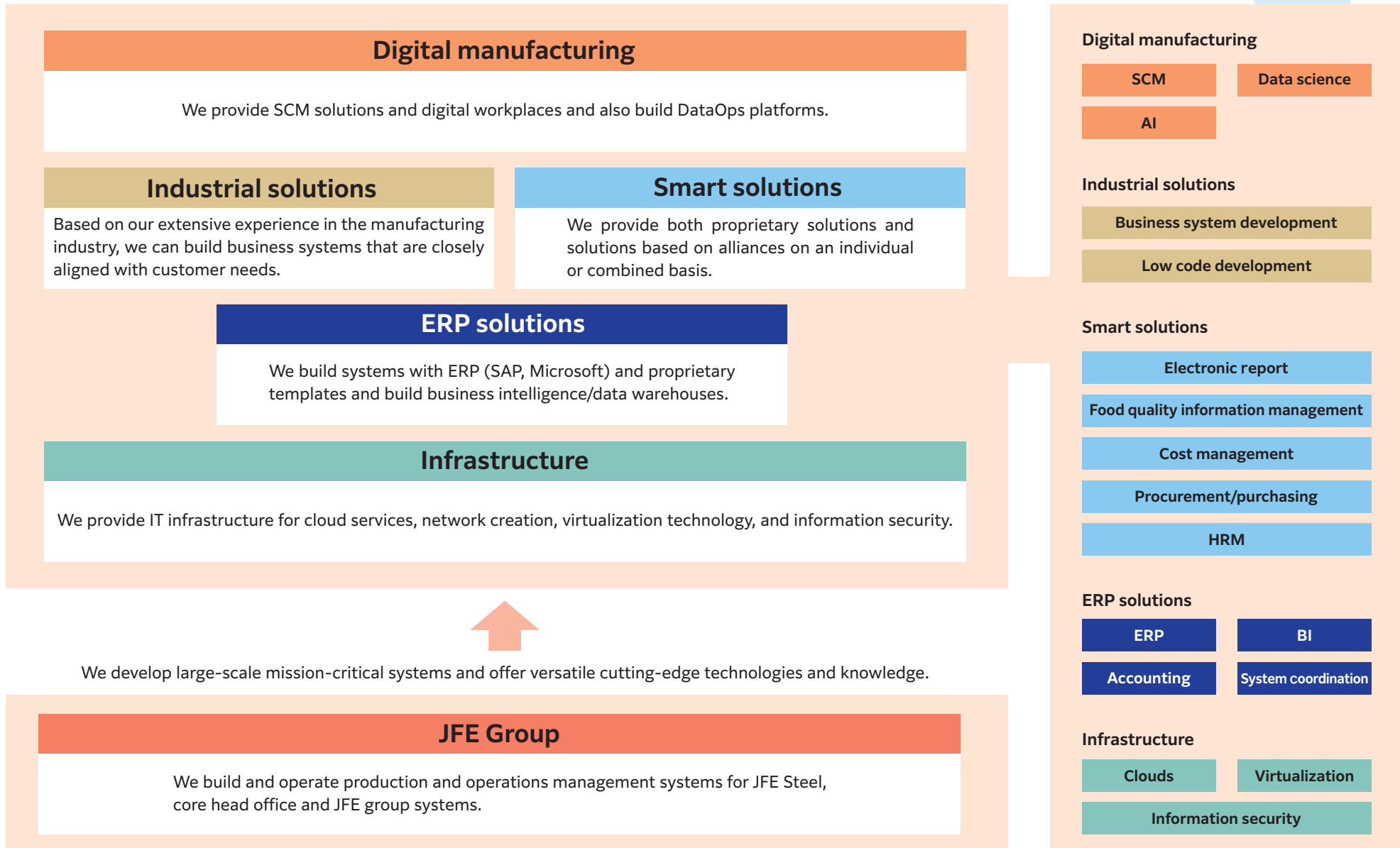
Drawing on its diverse business domains, JFE Systems “co-creates” beyond the normal bounds of business and company to provide new approaches. We not only help raise the competitiveness of our customers but also help solve societal issues.

Business Domain



# From IT infrastructure building to system development and DX, we propose solutions that integrate diverse business domains

## Business domain





# Lineup of diverse vendor-neutral solutions

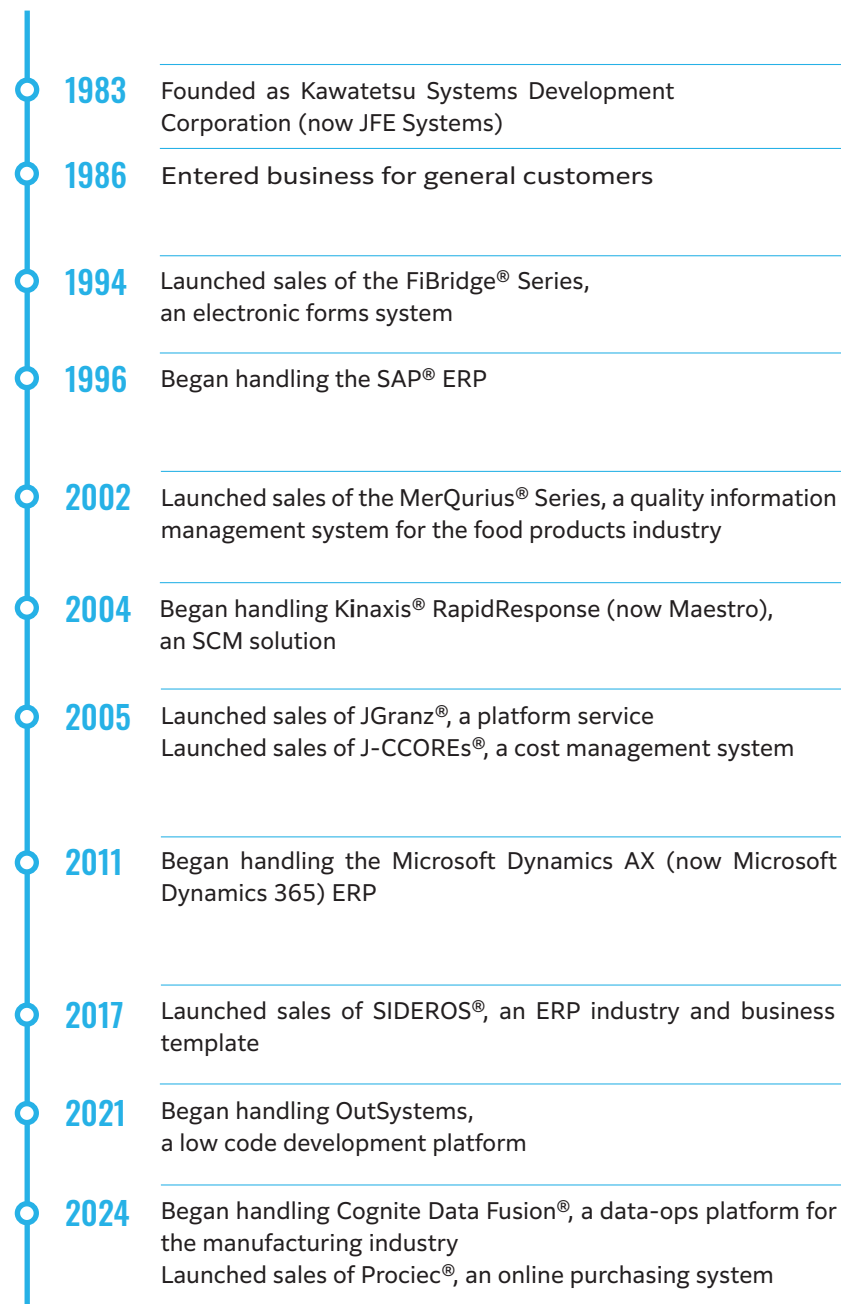
JFE Systems launched its business for general customers in 1986, three years after its establishment. Over the next 40 years, free of vendor-specific obligations, we've incorporated the systems and methods, from both inside and outside Japan, that we judged to be the best. And when a system or method was not available on the market, we developed it ourselves.

We propose composite diverse solutions to address the pressing needs of our customers.

Products & Services



## SOLUTION HISTORY

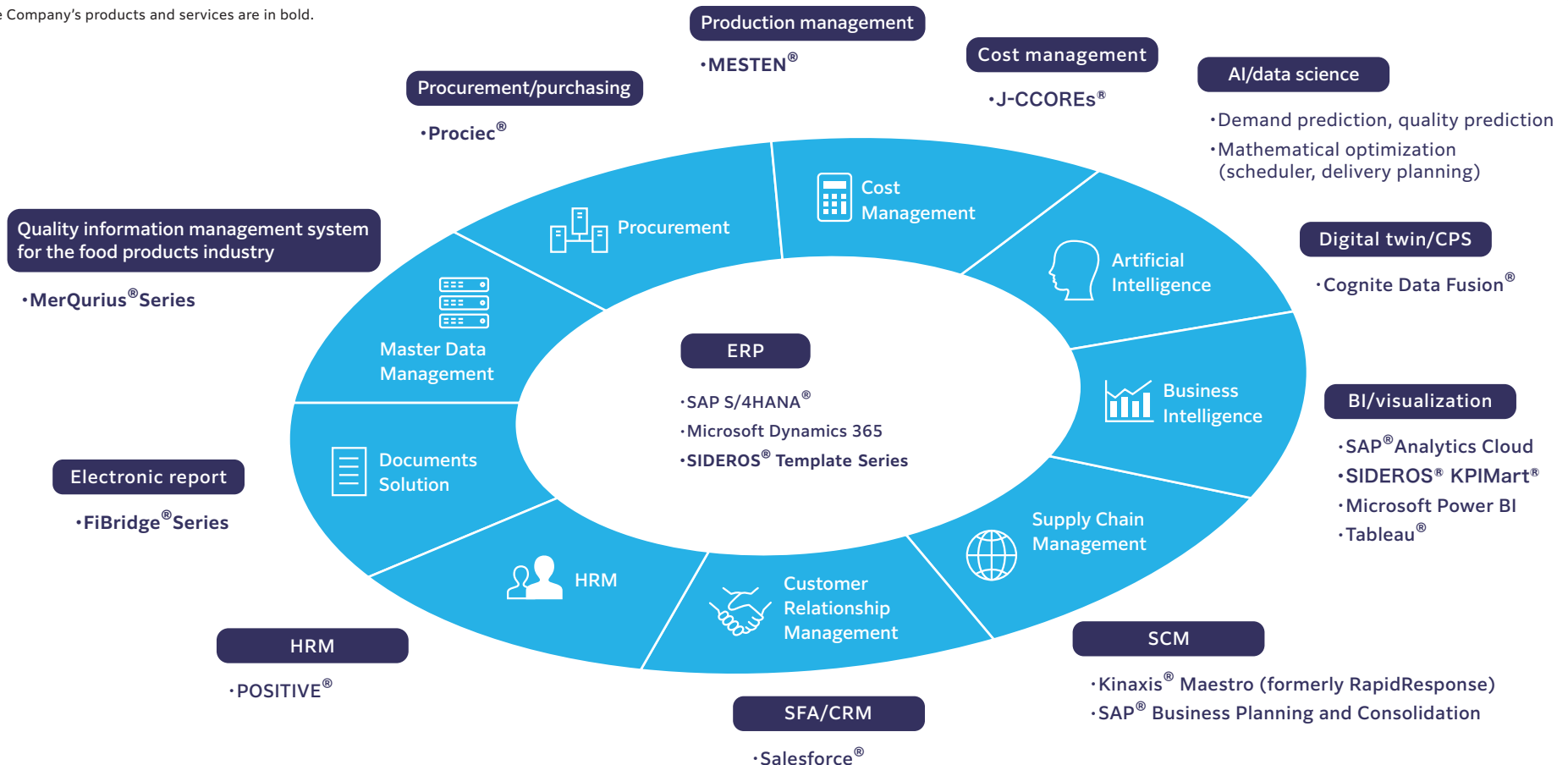




# From ERP and various business solutions to data collection, analysis, and utilization, we offer a lineup of diverse solutions

## Solution Lineup

\*The Company's products and services are in bold.



Platform/cloud

•JGranz®Series

System coordination

Low code development

•OutSystems  
•RakRak Framework 3  
•Microsoft Power Platform

RPA

•UiPath®

EAI/EC/EDI



## Pursuing possibilities for people, companies, and society to realize a sustainable society

Companies must fulfill their societal responsibilities if we hope to develop a sustainable society over the long term. These obligations encompass careful consideration for the environment, effective resources use, and effective human capital management.

Beyond providing IT technologies to solve the issues facing companies and society, JFE Systems seeks to reduce environmental impact, build a workplace environment in which all employees can demonstrate their abilities, and maintain a high level of governance.

Sustainability



# Working to solve issues by identifying 11 materialities and setting KPIs

## Materialities

### Solutions achieved through IT (including reductions in environmental impact)

- Propose and deploy new technologies from the customer's viewpoint.
- Solve social issues through DX and new technologies.
- Contribute to the environmental measures of the JFE Group.
- Protect the environment using proprietary technologies.

(Initiatives)

- In addition to developing business systems tailored to meet customer needs, provide optimized, comprehensive solutions by combining alliance products with products developed in-house.



### Health and productivity management

- Maintain both physical and mental health.
- Create comfortable workplaces.

(Initiatives)

- Create a workplace environment in which employees can work with peace of mind; implement various measures to promote employee health.



### Respect for diversity

- Achieve diversity, equity, and inclusion.
- Promote human resource development.

(Initiatives)

- Implement measures to strengthen employee awareness and spur motivation, thereby creating an environment in which all employees are positioned to play active roles and fully demonstrate their capabilities.
- Implement strategic placements and promotions for female executives and managerial development.
- Spread awareness of childcare leave and other programs; confirm intentions to take childcare leave; set up a childcare leave consultation desk; collect and promulgate examples of men taking childcare leave.



### Strong governance

- Undertake high-quality corporate governance and compliance.
- Achieve advanced information security.
- Build healthy partnerships with partner companies.

(Initiatives)

- Implement measures to ensure employees understand the spirit of compliance and conduct themselves accordingly.
- Make the JFE Group risk management policy a model for corporate activities and establish a basic information security policy.





# JFE Systems, Inc.

## COMPANY BROCHURE (2025.4)

Seavans South Building 18F,  
1-2-3 Shibaura,  
Minato-ku, Tokyo 105-0023

<https://www.jfe-systems.com/>



The names of companies, products, and services appearing in this document are the trademarks or registered trademarks of the respective companies.



# COMPANY DATA (2025.4)



## Overview

Company Name	JFE Systems, Inc.
Representative Director	Tetsuo Oki (President & CEO)
Head Office	Seavans South Building 18F, 1-2-3 Shibaura, Minato-ku, Tokyo 105-0023
Established	September 1, 1983
Capital	1.39 billion JPY
Number of	Consolidated:1,901 (As of March 31, 2025)
Employees	Non-consolidated:1,554 (As of March 31, 2025)
Listed	Tokyo Stock Exchange Standard Market (securities code:4832)
Total Number of	31,412,000 shares (As of April 1, 2025)
Shares issued	*Including 2,276 shares of treasury stock
Main shareholders	JFE Steel Corporation (65.16%)
Japan Subsidiary	JFE ComService Co., Ltd. IAF Consulting, Inc.
Business	Information systems integration, operations and maintenance, etc.
Management	<div> <div>President &amp; Director</div> <div>Tetsuo Oki</div> </div> <div> <div>Director</div> <div>Makoto Kuniyasu</div> </div> <div> <div>Director</div> <div>Jun Shimoda</div> </div> <div> <div>Director</div> <div>Hitoshi Sasai</div> </div> <div> <div>Director (non-standing)</div> <div>Toshiro Takeda</div> </div> <div> <div>Director (non-standing)</div> <div>Masayo Hobo</div> </div> <div> <div>Corporate Auditor</div> <div>Takehiro Matsui</div> </div> <div> <div>Corporate Auditor (non-standing)</div> <div>Yukako Wagatsuma</div> </div> <div> <div>Corporate Auditor (non-standing)</div> <div>Kenya Ezato</div> </div>



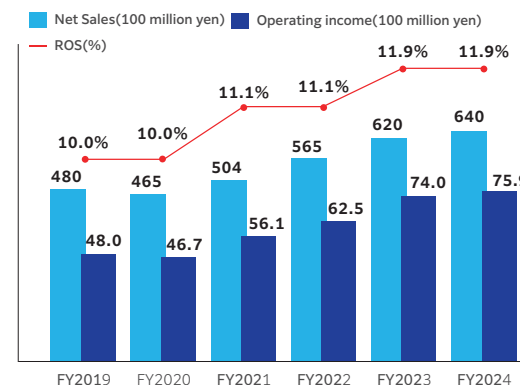
JFE Systems, Inc.

## Corporate History

Sep. 1983	Kawasaki Steel Systems Development Corporation (now JFE Systems, Inc.) established
Apr. 1986	Merged with Head Office System Department of Kawasaki Steel Corporation(now JFE Steel Corporation)
Oct. 1988	Merged with Factory System Department of Kawasaki Steel Corporation (now JFE Steel Corporation)
Oct. 1994	Merged with Systems Electronics Division (Information & Telecommunications Business and Electronics Device Business) of Kawasaki Steel Corporation (now JFE Steel Corporation)
Oct. 1998	Acquired Privacy Mark certification
Mar. 2000	Acquired ISO 9001 certification
Mar. 2001	Listed on Second Section of Tokyo Stock Exchange
Apr. 2002	Kawasho Information Technology Co.,LTD.(JFE ComService Co.,Ltd.) has become our subsidiary company.
Dec. 2004	Company name changed to JFE Systems, Inc.
Apr. 2011	Applications development and maintenance operations for JFE Steel and its group companies transferred from EXA Corporation
Apr. 2019	IAF Consulting, Inc. has become our subsidiary company.
Apr. 2022	Moved to the Standard Market through reorganization of Tokyo Stock Exchange markets

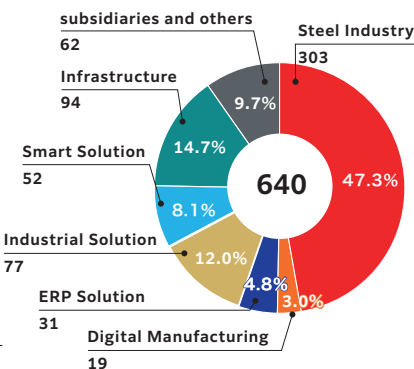
## Financial Information (FY2024)

### Net Sales and Operating income(Consolidated)



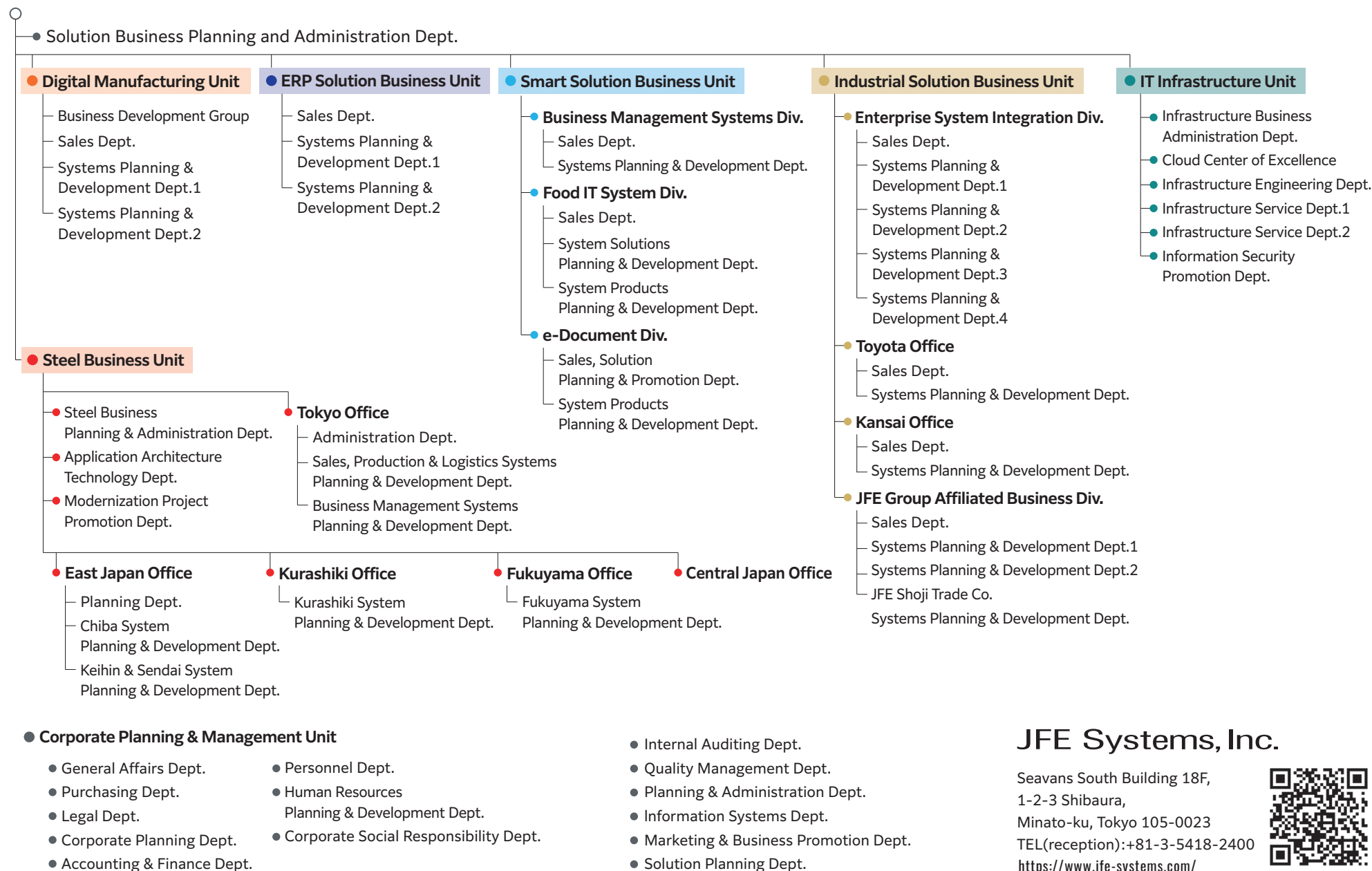
### Composition of sales by business

(Unit:100 million yen)





### Organizational Chart



## JFE Systems, Inc.

Seavans South Building 18F,  
1-2-3 Shibaura,  
Minato-ku, Tokyo 105-0023  
TEL(reception):+81-3-5418-2400  
<https://www.jfe-systems.com/>

